



ESG REPORT

- We help and do our best to make our world a better one -



TABLE OF CONTENTS

01/ INTRODUCTION

- 1.1 OUR APPROACH
- 1.2 A MESSAGE FROM OUR CEO

P3
P4

03/ DONATIONS AND SUPPORT TO ESG OR IMPACT ORIENTED CHARITY WORKS

P8

04/ SUPPORT OF ENVIRONMENTALISTS IN FINE ART

P11

05/ TECHNOLOGY PARTNER WITH SUSTAINABLE AND IMPACT INVESTING PROMOTION PROGRAMS

P13

06/ GREEN INFRASTRUCTURE & TECHNOLOGY

- 6.1 ENERGY EFFICIENT INFRASTRUCTURE
- 6.2 SUCCESSFUL IMPLEMENTATION OF GREEN TECHNOLOGY
- 6.3 MORE HEALTH AND SAFETY FOR EMPLOYEES

P15
P16
P17

02/ HUMAN RESOURCE MANAGEMENT (HRM)

- 2.1 EQUAL OPPORTUNITIES AND INTERNATIONAL REPRESENTATION
- 2.2 MORE AND BETTER OPPORTUNITIES FOR WOMEN
- 2.3 DISTRIBUTION OF EMPLOYEES BY EDUCATION


P5
P6
P7



OUR APPROACH

advinda Investor Cloud gives utmost importance to Corporate Social Responsibility that influences the lives of various stakeholders like customers, employees, shareholders, communities and environment in a positive manner through all aspects of our business operations.

advinda believes that well thought initiatives, even the smallest ones, with significant social impacts, make our world a better one.



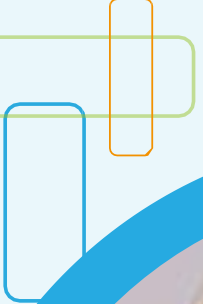
CSR continues to be a critical importance since it leads business operations in an ethical and sustainable way and deals with its environmental and social impacts.

As a responsible enterprise, advinda recognized its role to reduce CSR related issues and successfully developed and implemented its own CSR strategies which act as a catalyst to bring positive ESG outcome through our technological business operations.

To achieve certain CSR goals, advinda has already taken effective steps on ESG (Environmental, Social, Governance) investing or impact investing, economic impact, social impact, ethical commitment, Green Infrastructure & Technology, and contribution in environment sustainability focused charity works.

A collection of white line-art icons on a blue background. From left to right: a smartphone with a cloud and arrows, a leaf, a person with a clock, a person with a gear, and a person with a speech bubble.

A MESSAGE FROM OUR MANAGING DIRECTOR

A graphic of two paperclips, one blue and one orange, on a light green background.

Although we are still a very small firm, we saw great value in taking on ESG engagement more sooner than later.

We believe that being at the forefront of relevant issues will generate long-term goodwill with the company's employees, customers and community at large and lead to reputational benefits. In addition to being a "good corporate citizen", leading on ESG issues will enhance our well-being overall.








We have started out with small things, which were easy to do and continued with those we thought we have to do and which also made an impact on people, the environment and governance.

Our vision is to help making the world a better one for all of us!

Nina Dohr-Pawlowitz
January 2024

EQUAL OPPORTUNITIES AND INTERNATIONAL REPRESENTATION

advinda HRM provides equal opportunity for all nationalities without discriminating on the basis of race, skin color, gender, sexual orientation, age, religion, beliefs, ethnic origin, political views or any other legally protected characteristic. We have employees from all over the world and implemented very effective employment policies to promote equal opportunity.

  <p>Nina Dohr-Pawlowitz, Managing Director</p>	  <p>Liji Babu Senior Data Scientist & Head of Research</p>
  <p>Harsha Bharuka Sales Associate</p>	  <p>Printo Mathai Internet- and Social media manager</p>



MORE AND BETTER OPPORTUNITIES FOR WOMEN



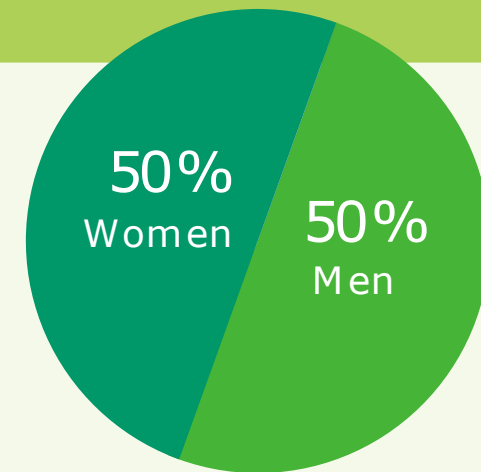
advinda's CSR gender efforts start with bringing women up to front row by assigning them responsible job positions.

We are a women led Fintech firm and **an active business member and supporter of FondFrauen**, the leading initiative by women for women in the German-speaking asset management industry based in Germany, Austria and Switzerland.



FONDS professionell, Fondsfrauen-Gipfel 2020:
The three female founders, from left to right: Anne Connolly, Manuela Fröhlich, Anke Dembowski celebrating the 5th anniversary of the association

advinda believes promoting gender equality is an encouragement to greater economic prosperity and bringing women up is a necessity and the need for greater respect and opportunities for women is becoming an ever more prominent feature of the public conversation.



Percentage of advinda employees
(Gender basis)

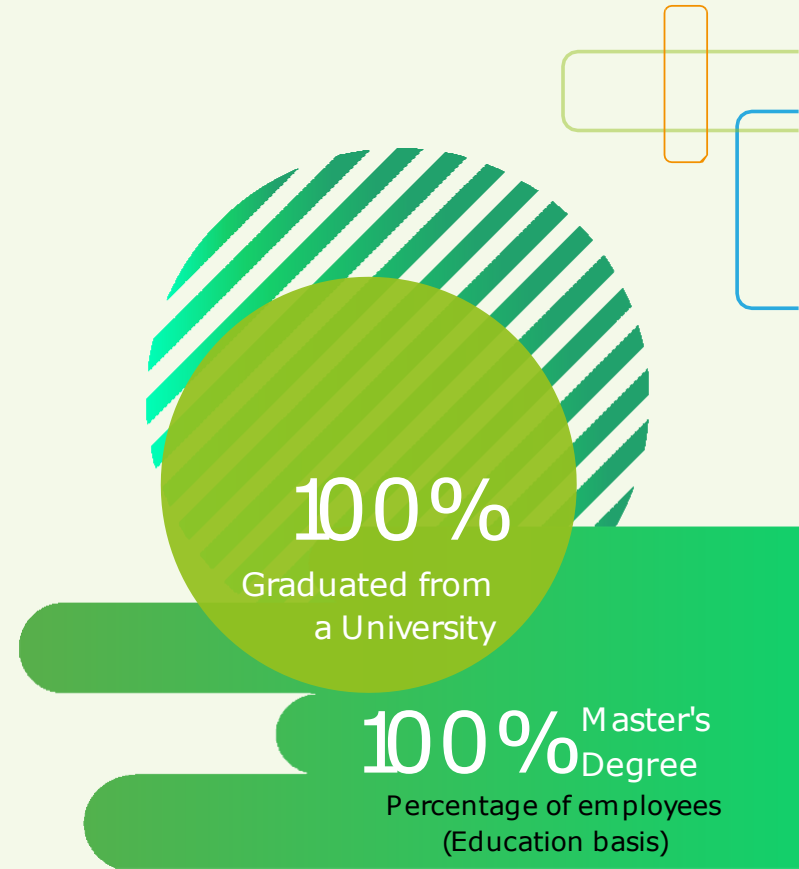


DISTRIBUTION OF EMPLOYEES BY EDUCATION

advinda always cares about the educational quality of employees and their academic background since we know employees are the most important asset of our firm.



We hire top talented, high qualified candidates followed by effective talent and retention management. Our employees have been provided with a great platform to grow their talent and opportunity for continued learning.





DONATIONS AND SUPPORT TO ESG OR IMPACT ORIENTED CHARITY WORKS

One of advinda's primary CSR initiative is giving monetary donations and support to sustainability focused charity works. In June 2018 we supported the DCPLA's Alternative Investments Day as a technology partner. DC Placement Advisors (DCPLA) is a leading global placement agent in the alternative investment sector with HQ in Munich (Germany).

The event was marked with an exclusive conference reception for all sponsors and conference attendees with the parallel preview of fine art exhibition by leading German artist and environmentalist Daniela Flörsheim on the evening of 14th June, 2018. This reception was co-hosted by advinda Investor Cloud.



Jane Goodall Institut Deutschland

We were also delighted to announce that within that context we supported the global Jane Goodall foundation and its sustainable projects by donating 25% of all proceeds from the sales of the artworks of Daniela Flörsheim.



DONATIONS AND SUPPORT TO ESG OR IMPACT ORIENTED CHARITY WORKS

“Bringing the finance and environmentalism worlds together through an authentic artist like Daniela Flörsheim is both courageous and incredibly valuable to us. Perhaps in this way, she will reach even more people – and, at least, a different group of people – than she would have if she had become a zoologist like she intended. Art and nature can be such important partners.”

Said Monica Lieschke, Executive Director, Jane Goodall Institut (Germany) on the occasion of Daniela Flörsheim’s contribution.

This donation to the Jane Goodall Institute’s “Roots & Shoots program” was very important to us. The Roots & Shoots global youth program flourishes in nearly 100 countries. Through Roots & Shoots, participants identify and address problems in their communities, while becoming the compassionate citizens that our planet needs.



Daniela Flörsheim, Flamingos, 2018, Watercolor on canvas, 120 x 50 cm



Daniela Flörsheim, Two Arctic Wolves, 2018, Watercolor on paper, 64 x 61 cm



DONATIONS TO IMPACT ORIENTED CHARITIES

Our firm wants to be a force for good in society. We are driven to make a difference in people's lives and create positive social impact and support where help is needed.

We invest in our communities to create opportunities that promote a fairer and more inclusive society.



Since its foundation in October 1987, Blindenwerkstatt Dorsten supports blind and otherwise disabled employees so that they have the opportunity to shape their lives freely. This support does not only concern the livelihood, but gives all employees self-confidence and the feeling of being able to create something productive.



The Münchner Kindl-Heim is a curative educational child and youth welfare facility of the state capital Munich. On the basis of the provisions of the Child and Youth Welfare Act, it offers differentiated aids for upbringing, which for stabilizing and promoting the development and social integration of disabled children, adolescents and young people serve adult. The spectrum of the offer with a total of around 100 places ranges from outpatient measures (repatriation assistance) to semi-inpatient help (therapeutic daycare center) up to inpatient accommodation in different residential groups as well as the socio-educational assisted living.



The Don Bosco Jugendwerk Nürnberg is an institution for youth social work and youth welfare of the Salesians of Don Bosco, a Catholic religious order. With a youth hostel for trainees and block students, the "Bartolino" daycare center and various social projects, we want to help ensure that *"the life of young people succeeds"*.





SUPPORT OF ENVIRONMENTALISTS IN FINE ART

For more than two decades advinda's founder & CEO Eva March is collecting fine art from artists who care specifically about well-being of natural life and preservation of animals on the planet.

Eva has a very strong presence of female artist Daniela Flörsheim in her art collection.

Daniela Flörsheim is a forward thinking artist who is committed and inspired in her work by her professor.

She is a master student with honors of Joseph Beuys.

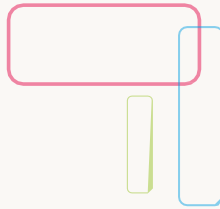


Beuys ranks amongst the most radical and influential artists to emerge during the second half of the twentieth century. An enigmatic figure who was never one to shun controversy, Beuys strove to establish a truly democratic approach towards making and presenting art. Daniela mindfully reflects his immense heritage and meanings and it is present in her thinking. Her vibrant oeuvre, however, speaks for itself; she is powerful in her expressions and her artwork shows what she feels about nature and life on earth.

Daniela Flörsheim, Papaver Oriental, 2016,
Watercolor on canvas, 100 x 100 cm



SUPPORT OF ENVIRONMENTALISTS IN FINE ART



Daniela Flörsheim, Mon Amour, 2005,
Watercolor on canvas, 100 x 100 cm

“Humans are young on this planet; many of the beings we share this earth with have been here far longer than we have. Humanity only succeeded and was able to grow to our current point because of the richness of life and resources that exist. If we do not protect this diversity, nature may continue, but we will be the ones truly in danger. We don’t own the world; we are borrowing it from those round us and only by restoring them may we restore ourselves.”

- Mariah Morgan Howell, 2018



Daniela Flörsheim, Beauty and Beast, 2005,
Watercolor on canvas, 100 x 100 cm

“Daniela Flörsheim claims the mantle of warden; with brush not sword, she wields the medium of oil on canvas to stand for those with no voices – that dwindling firmament of nature we co-exist with.”

- Nushin Grey, April 2018



TECHNOLOGY PARTNER WITH SUSTAINABLE & IMPACT INVESTING PROMOTION PROGRAMS

We are the technology partner of the **3rd & 4th Sustainable Investor Summit DACH Forum (2020 & 2021)**, the leading forum to promote and strengthen the market for sustainable and impact investments in Germany, Austria and Switzerland.

"We believe finance can be a force for good. Join us."
- Hans-Peter Dohr, Managing Partner ICA

The forum, an initiative of ICF, a division of ICA Institutional Capital Associates GmbH, holds private, invitation-only forums, conferences and round table events for managers and decision-makers on the most exciting topics and trends in alternative investment markets, from infrastructure and real estate to private debt and private equity.

IC Institutional Capital

It attracts the leading investment managers across all asset classes (private and public markets), banks, law firms, tax firms and investors from the insurance and pension fund industry and their advisors, family offices and foundations to discuss the most important issues around impact investment and sustainability.



TECHNOLOGY PARTNER WITH SUSTAINABLE & IMPACT INVESTING PROMOTION PROGRAMS



4th Sustainable Investor Summit; 2021
Vienna & Frankfurt



Images Source: <https://www.ic-icf.com/>



ENERGY EFFICIENT INFRASTRUCTURE

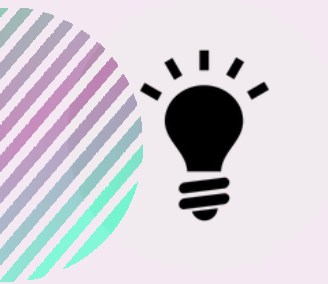
advinda is located at a very ecofriendly building and energy efficient office building complex.

For instance, we have more energy efficient windows and doors which maximizing use of natural light, very high indoor air quality, very low volatile organic compounds paints for the building and also employing efficient waste management.





SUCCESSFUL IMPLEMENTATION OF GREEN TECHNOLOGY



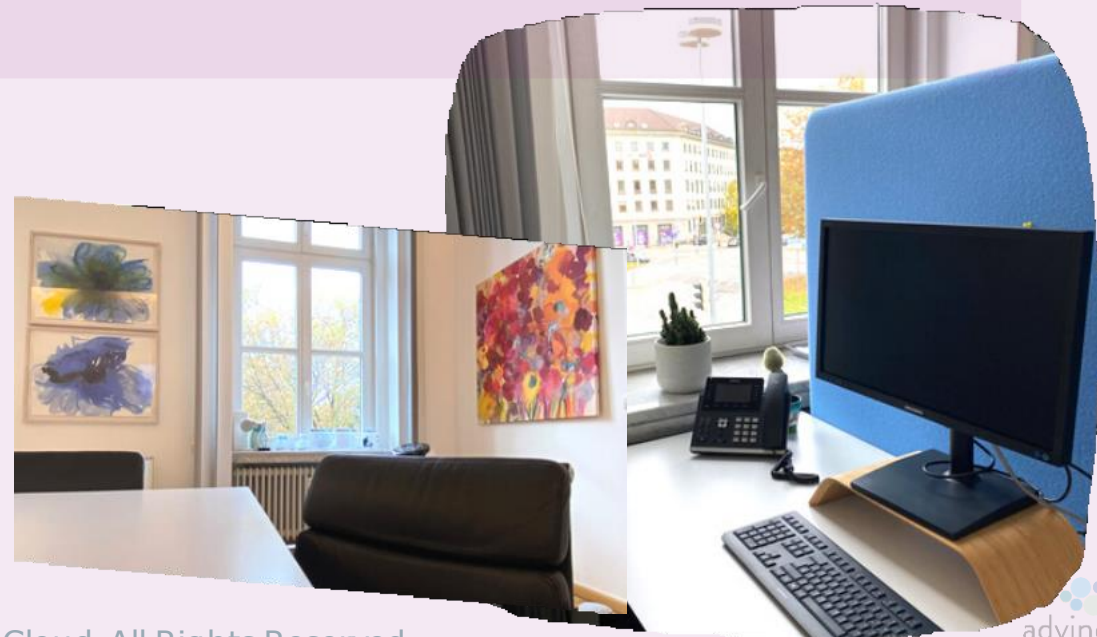
We successfully implemented energy efficient electronic equipment in our office, for instance, LED bulbs, printer, and computer monitors which consume less electricity and also have an energy efficient office kitchen.



We have reduced logistic efforts for the supply of drinking water to zero and deploy a sustainable water-enrichment utility in our kitchen where we take the water directly from the tap.



advinda always prefers e-transactions and promote paperless work environment.





MORE HEALTH AND SAFETY FOR EMPLOYEES

Through regular maintenance of our company building, we make sure the health and safety of employees gets high priority.

advinda gives importance to waste separation and non-smoking environment in order to maintain a sustainable work environment.





We make your fundraising easier.

advinda Investor Cloud
www.advinda.com

Prinzregentenstr. 54
80538 München, Germany

Please consider the environment before printing this report.
© 2024 advinda Investor Cloud. All Rights Reserved